

SPECIFICATIONS

SUBSEA CAMERA TONGA



Description

The Subsea Ethernet Camera is a standalone unit for capturing video and streaming it through Ethernet.

Intuitive web-based user interface for configuration via web browser.

Web-interface is accessed by entering the IP address directly into the web browser.

Multi-cast video stream is available for simultaneously streaming to several monitors/destinations.

Features

- Compact design
- Encoding latency ~80ms
- Web browser configuration interface
- Titanium housing
- Adjustable bandwidth and resolution
- Output Stream: H264
- Streams via: Unicast or Multicast
- 4000m depth rating
- Open API for external control
- Sapphire viewport

SPECIFICATIONS

SUBSEA CAMERA TONGA

General Technical Specifications

Type		Subsea Camera Tonga
Dimensions w/connector	mm	178x51
Weight in air	g	~930
Weights in water	g	~630
Temperature Operational (ambient)	°C	0 to +40
Temperature Storage	°C	-30 to +70

Electrical

Supply Voltage	VDC	24 (10-30)
Power Consumption	W	~4

Performance

Benchmark Latency	ms	~80 (from captured picture to presented on monitor)
Depth Rating	m	4000
Horizontal Field of View	°	~74 (in water)
Resolution		720P/1080P
Bitrate	Mbps	0.6 - 40
Video Compression		h264
Dynamic Range	dB	86
Sensor type		IMX322
Sensor size	Inch	1/2.9
Minimum illumination	Lux	0.01

Communication

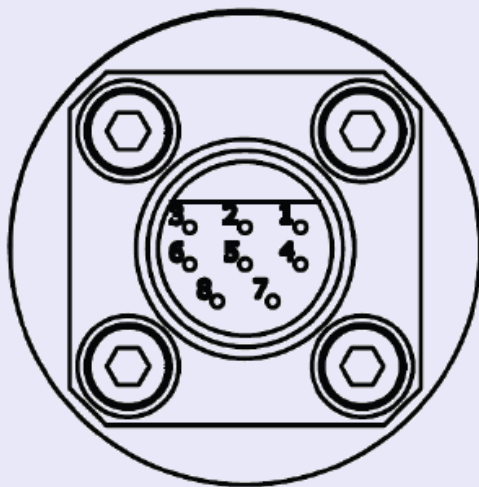
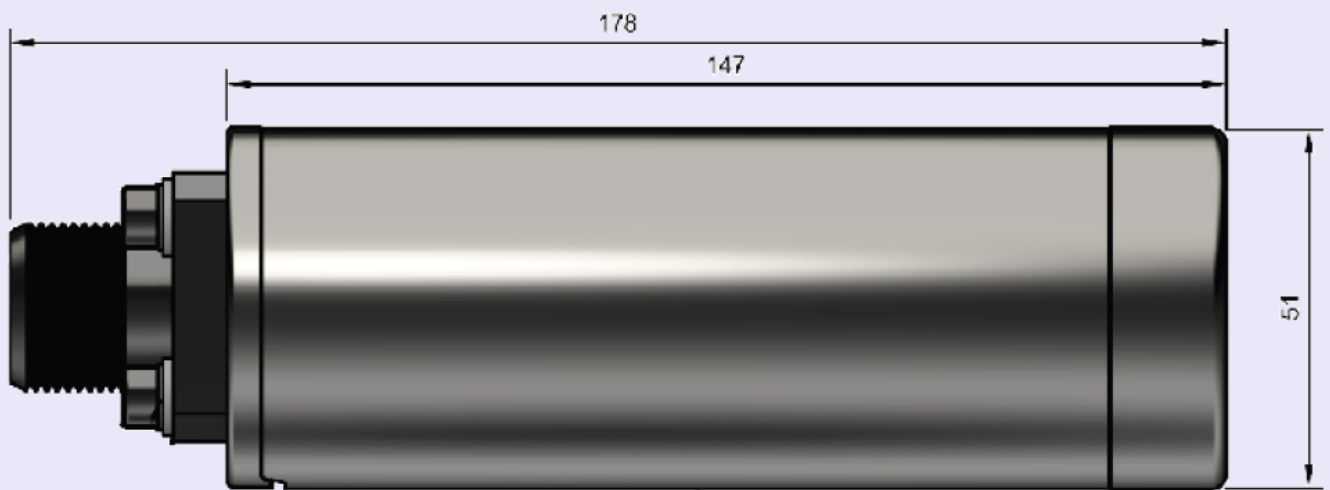
Ethernet	Mbps	10/100
Default IP		10.13.37.243

Ordering Part Numbers

Description	Part Number
Subsea Camera Tonga	117038

SPECIFICATIONS

SUBSEA CAMERA TONGA



Glenair 5506-1508 Connector Pinout

1:	0V	_____
2:	24VDC	_____
3:	NC	
4:	NC	
5:	Eth Tx+	_____
6:	Eth Tx-	_____
7:	Eth Rx+	_____
8:	Eth Rx-	_____



I X X S