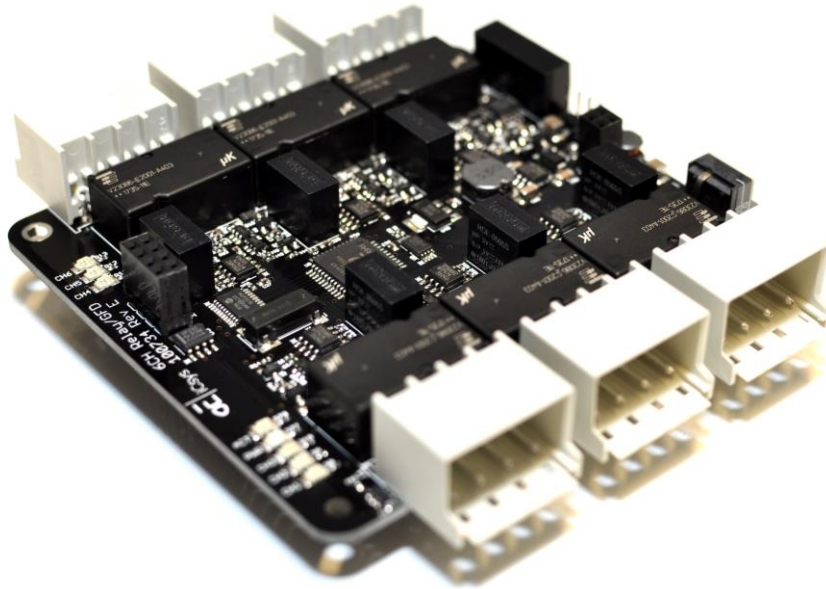


SPECIFICATIONS

PCB CS 6CH RELAY/GFD



Description

The Relay & GFD board is an expansion board for the control system range. It runs stacked with a master PCB.

The benefit of isolation monitoring on all relays is the ability to detect, switch off and isolate the troubled circuit while other circuits are active.

The PC/104 stacking feature allows for swift mounting and keeps wiring to a minimum.

Complete range of stackable expansion boards for various applications available.

Features

- Control System Expansion
- LED Indicators for Diagnostics
- Stackable with other CS PCBs for shared power & CAN-bus.
- PC/104 hole pattern
- Two pole relays for complete isolation
- Current reading on all channels
- Ground fault detection on all channels
- Auto fuse on all channels
- Dedicated LEDs for on/off indication on each channel
- Actual isolation resistance can be read from the user interface of the system.

SPECIFICATIONS

PCB CS 6CH RELAY/GFD

General Technical Specifications

Type		PCB CS 6CH Relay/GFD
Part Number		100734
Dimensions	mm	96x90x16.4
Weight	g	~144
Temperature Operational (ambient)	°C	-20 to +70
Temperature Storage	°C	-20 to +70

Electrical

Supply Voltage	VDC	24VDC (12-30)
Power Consumption	W	~5W

Communication

CAN-Bus	kbps	250
---------	------	-----

Performance

Relay Operating Voltage	VDC/VAC	0-48 / 0-250
Relay Operating Current	A	15 @ 250VAC
Relay Operating Current	A	15 @ 24VDC
Relay Operating Current	A	3 @ 48VDC

Ordering Part Numbers

Description	Part Number
PCB CS 6CH Relay/GFD	100734

Accessories

Connector 4way	100459
Spacer M3 16mm w/stud Steel	104764

SPECIFICATIONS

PCB CS 6CH RELAY/GFD

